



Adobe® Workflow Server

Connect people, processes, and applications

Core business systems, such as ERP and CRM, effectively manage data-centric business processes, but organizations need a way to automate the manual, human-intensive processes that operate outside and around these systems.

Adobe Workflow Server is an eXtensible Markup Language (XML)-based workflow application that automates form-based processes involving human participation and spanning multiple enterprise applications. Adobe Workflow Server enables organizations to easily design, deploy, and manage their business processes while integrating their core business systems.

Effective Business Processes

Adobe Workflow Server allows organizations to automate their business processes and embed their own unique business rules, roles, deadlines, and reminders in the automated system. Adobe Workflow Server is perfectly suited to solve the process inconsistencies and accountability issues that often plague organizations with manual processes.

Seamless Integration

Processes often operate across organizational boundaries and interact with different core business systems. Using Adobe Workflow Server, participants can access information from different applications seamlessly, even without direct access to the system. This level of integration allows organizations to process and access information effortlessly and efficiently without changing core systems.

Improved Business Agility

With most manual processes, there is no way to track how efficient the process is. Using the monitoring and reporting tools in Adobe Workflow Server process owners can identify and address bottlenecks and inefficiencies in a given process, ultimately reducing processing costs and improving service levels.

Key Features

Scalable

The flexible architecture of Adobe Workflow Server scales both horizontally and vertically to suit an organization's continuous performance and availability needs. Adobe Workflow Server provides application reliability, ensuring no application downtime.

XML-Based Data

Adobe Workflow Server makes use of XML, the recognized industry standard for data interchange, to enable easier sharing of information among applications and allow for the creation of long-term document archiving.

Support for Forms

Users can choose to participate in a process using Hypertext Markup Language (HTML) or Adobe® Portable Document Format (PDF) forms, which facilitate data capture, decrease cycle times, improve data quality, and optimize the end users' experience.

Simplify Process Design

- Create dynamic forms
- Route XML data
- Enable multiple views using the same data
- Add attachments to documents using a document envelope
- Use flexible e-mail and Web-based routing



Web-Based User Interface

End users can set individual preferences, including "out of office" designates, initiate workflows, or retrieve daily work items from shared and individual work lists from one customizable, easy-to-use, central location.

Graphical Process Design Tool

Designers can quickly and easily map out each step of the business process they are automating, speeding up deployment and eliminating the need for specialty programmers.

Role Builder

Organizations can create role sets and define processes based on generic roles rather than specific individuals. This means that organizations can leverage their existing organizational structure so there's no application downtime when personnel change.

Directory Service Integration

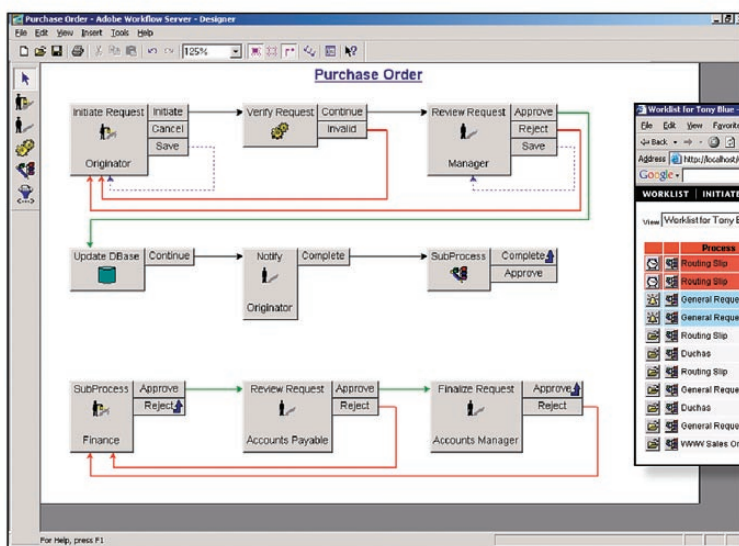
Out-of-the-box support for Microsoft Active Directory vastly simplifies the solution's implementation and administration. This support eliminates the need for every application to maintain its own user directory.

Deadlines and Reminders

Organizations can support a responsive, around-the-clock customer environment by developing processes that ensure work items are dealt with in an efficient and timely fashion.

Rule Wizard

An easy-to-follow interface enables process owners to define business rules without programming, which helping organizations get their automated processes up and running quickly. A full development environment is also available for creating more complex rules.



An intuitive web interface allows the user to initiate workflows (or items) and track their progress

The screenshot shows a web browser window titled 'Worklist for Tony Blue'. The browser address is 'http://localhost:webaccess/WebAccess.asp?Page=WorkList'. The page has a navigation bar with 'WORKLIST', 'INITIATE', 'SEARCH', 'PREFERENCES', and 'LOGOUT'. Below the navigation bar is a table of tasks. The table has columns: Process, Instructions, Initiated, From, and Received. The tasks listed include 'Routing Slip', 'General Request', 'Duchas', and 'WWW Sales Order' with various instructions and timestamps.

Process	Instructions	Initiated	From	Received
Routing Slip	Please review the marketing ads for the next issue	2003 06 02 10:52:55	Tony Blue	Sharon Stone
Routing Slip	Please review and approve the new pricing	2003 05 06 21:51:51	Tony Blue	Tony Blue
General Request	Purchase Request	2003 06 02 18:23:14	Tony Blue	Tony Blue
General Request	Network access for newhire	2003 05 06 21:58:27	Tony Blue	Tony Blue
Routing Slip	Routing Slip results	2003 06 02 18:54:01	Tony Blue	Tony Blue
Duchas	Please review this case and comment	2003 05 09 21:09:57	Tony Blue	Tony Blue
Routing Slip	Routing Slip results	2003 05 09 21:53:05	Tony Blue	Tony Blue
General Request	Complete this request which reached a deadline in the worklist of Sharon Stone	2003 05 06 21:52:05	Tony Blue	Sharon Stone
Duchas	Please review and approve or close this case	2003 04 05 15:50:07	Tony Blue	Tony Blue
General Request	Request from Tony Blue	2003 02 11 18:07:11	Tony Blue	Tony Blue
WWW Sales Order	Please approve or reject the sales order submitted by customer: Bill Berg	2003 01 24 14:06:33	Internet Applicant	Internet Applicant

Process Designer allows the user to easily define the business process using a process map

System Requirements

Adobe Workflow Server supports
Microsoft® Windows® 2000.

FOR MORE INFORMATION

To learn more about Adobe Workflow Server and the complete line of Adobe server products, please visit www.adobe.com/server.

Adobe Systems Incorporated • 345 Park Avenue, San Jose, CA 95110-2704 USA • www.adobe.com

Adobe, the Adobe logo, Adobe Workflow Server, and "Tools for the New Work" are either registered trademarks or trademarks of Adobe Systems Incorporated in the United States and/or other countries. Microsoft and Windows are either registered trademarks or trademarks of Microsoft Corporation in the United States and/or other countries. All other trademarks are the property of their respective owners. © 2002 Adobe Systems Incorporated. All rights reserved. Printed in the USA.

© 2003 Adobe Systems Incorporated. All rights reserved. Printed in the USA.

95001833 6/03



Tools for the New Work™